

Butterfly Valve K4 with pneumatic actuator



This print contains no warranty promise, but it should give you some first information. The product range is extended continuously, therefore the versions and types correspond to the actual status of printing.
Subject to technical modifications!

General:

- Sealing material: EPDM, FPM
- Body material: PP-GF
- Disc material: PVC-U, PP, PVDF
- Dimensions: DN65 – DN200
d75 – d225
2 ½" – 8"
- Flange connections: DIN 2501 PN10
ANSI B 16,5 Class 150
JIS 10 K
BS Table D&E
- Additional dimension: DN65/d63 PVC-U
DIN 2501 PN10

Operating pressure: PVC-U, PP, PVDF PN10

Characteristics:

- only sleeve gasket and disc in touch with medium
- double sealed shaft
- integrated bracket for fix point mounting
- simple and quick assembling of the actuator without any extra parts

Material of actuator:

- Casing: anodised aluminium
- Casing cover: expoxy powder coated aluminium
- Screws/nuts: stainless steel

Ambient temperature: -20°C to +80°C

Control air: filtered air according to PNEUROP/ISO class 4

Mounting position: any

Operation capacity/operation pressure:

- DA -> double acting / 5,5 to 10 bar
- SR -> single acting / 5,5 to 8 bar

Angle of rotation: 90°, travel limitation adjustable on both sides -10° to +10°

Mounting:

- Actuator – valve: ISO 5211
- Actuator – pilot valve: NAMUR (VDI/VDE3845)
- Actuator – feedback devices: NAMUR (VDI/VDE3845)

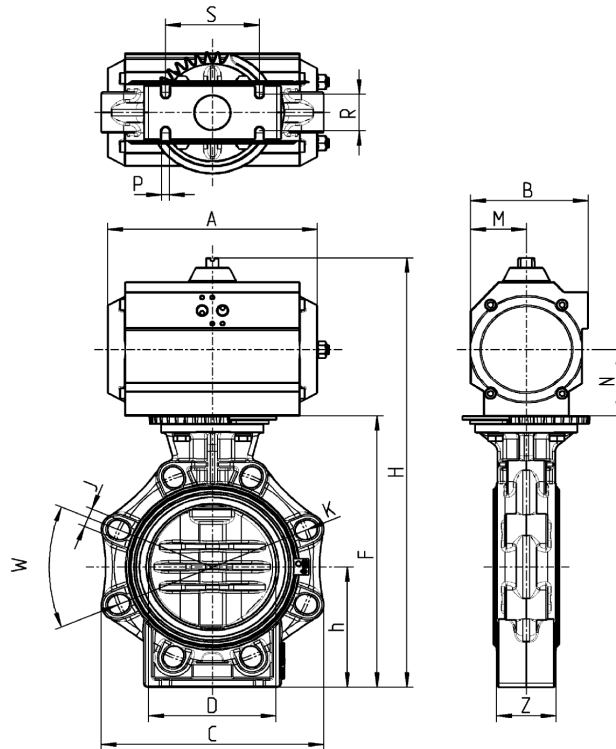
Accessories:

- limit switch box
- 3/2 and 5/2 ways pilot valves
- throttle valves
- air filter

Butterfly Valve K4 with pneumatic actuator



Dimensions:



| | | | | | | | |
|---------------|---------|----------|-----------|-----------|-------------|-----------|----------|
| DN | 65 | 80 | 100 | 125 | 150 | 200 | |
| d | 75 | 90 | 110 | 140 | 160 | 225 | |
| G | 2 ½" | 3" | 4" | 5" | 6" | 8" | |
| W | 90° | 45° | 45° | 45° | 45° | 45° | |
| J | 19 | 19 | 19 | 23 | 23 | 23 | |
| K | 127-145 | 146-160 | 175-190,5 | 209,5-216 | 234,5-241,5 | 290-298,5 | |
| D | 65 | 80 | 100 | 125 | 150 | 200 | |
| C | 133 | 176 | 206 | 234,5 | 261 | 314 | |
| Z | 46 | 49 | 56 | 64 | 70 | 71 | |
| S | 55 | 70 | 85 | 100 | 110 | 145 | |
| R | 25 | 30 | 35 | 45 | 45 | 40 | |
| P | 7 | 9 | 9 | 9 | 9 | 9 | |
| h | 100 | 100 | 115 | 130 | 147,5 | 175 | |
| F | 232 | 239 | 269 | 303,5 | 333 | 395 | |
| PN | 10 | 10 | 10 | 10 | 10 | 10 | |
| Single acting | Antrieb | UT-25 SR | UT-30 SR | UT-35 SR | UT-40 SR | UT-45 SR | UT-50 SR |
| | H | 353 | 282 | 412 | 499,5 | 529 | 591 |
| | A | 239 | 230 | 246 | 290 | 351 | 361 |
| | B | 96 | 113 | 138 | 138 | 151 | 185 |
| | N | 63 | 70 | 87,5 | 87,5 | 92 | 114 |
| Couple acting | Antrieb | UT-17 DA | UT-20 DA | UT-25 DA | UT-30 DA | UT-35 DA | UT-40 DA |
| | H | 353 | 382 | 412 | 465,5 | 529 | 591 |
| | A | 197 | 177 | 239 | 230 | 246 | 246 |
| | B | 85 | 96 | 96 | 113 | 138 | 138 |
| | N | 48 | 60 | 63 | 70 | 87,5 | 87,5 |
| M | 36 | 43 | 43 | 52 | 65,5 | 65,5 | |

Dimensions in mm

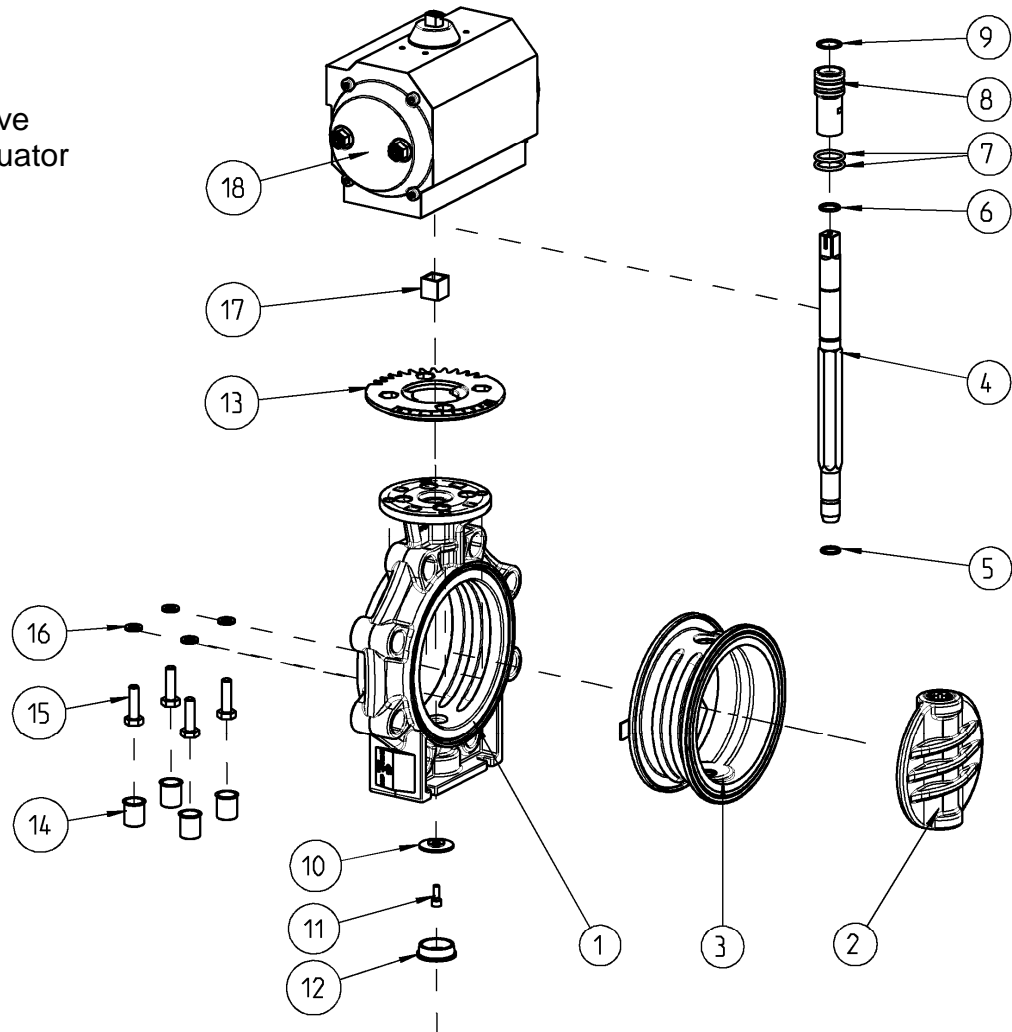
© Praher Kunststofftechnik GmbH DB/EV/D/09/10/160/B Subject to technical modifications!

Butterfly Valve K4 with pneumatic actuator



Exploded drawing:

- 01. Body
- 02. Disc
- 03. Sleeve
- 04. Shaft
- 05. Seal shaft below
- 06. Seal shaft above
- 07. Seal pilot bushing
- 08. Pilot bushing
- 09. Retaining ring
- 10. Holding disc
- 11. Screw
- 12. Cap
- 13. Cover plate
- 14. Cap
- 15. Screw
- 16. Tooth wheel
- 17. Reducing sleeve
- 18. Pneumatic actuator



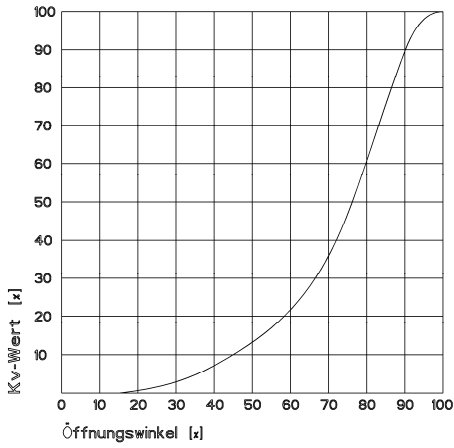
© Praher Kunststofftechnik GmbH DB/EV/D/09/10/160/B Subject to technical modifications!

Butterfly Valve K4 with pneumatic actuator

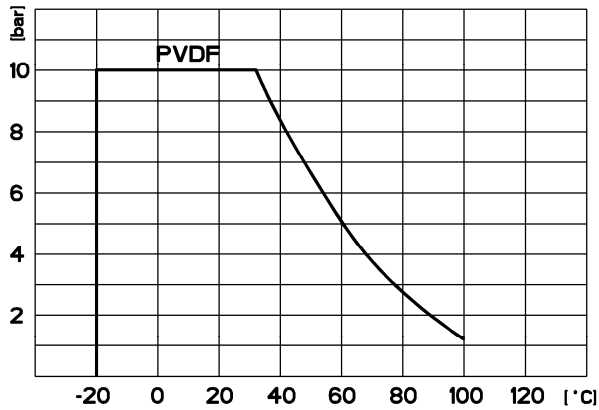
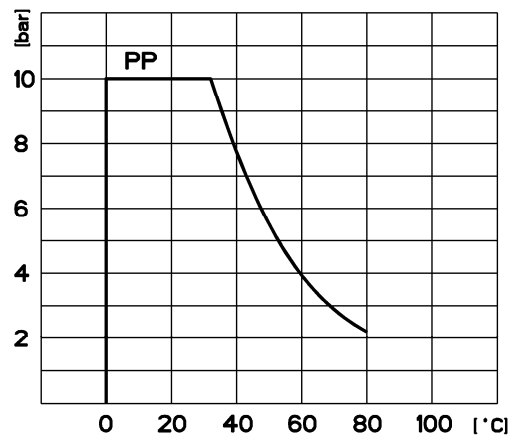
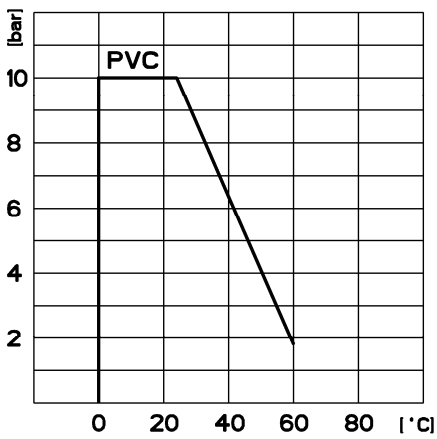


Diagrams:

Flow – Characteristic



Pressure – Temperature – Diagrams

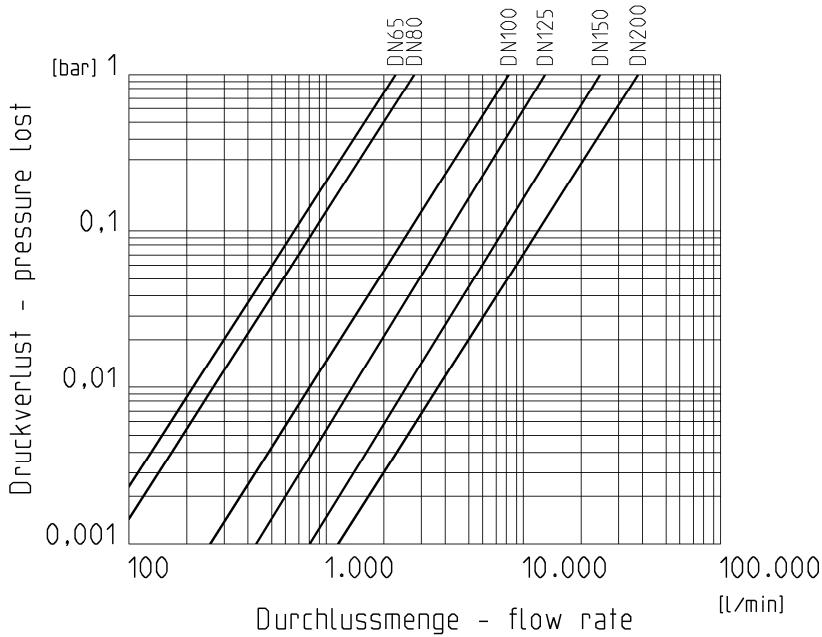


© Praher Kunststofftechnik GmbH DB/EV/D/09/10/160/B Subject to technical modifications!

Butterfly Valve K4 with pneumatic actuator



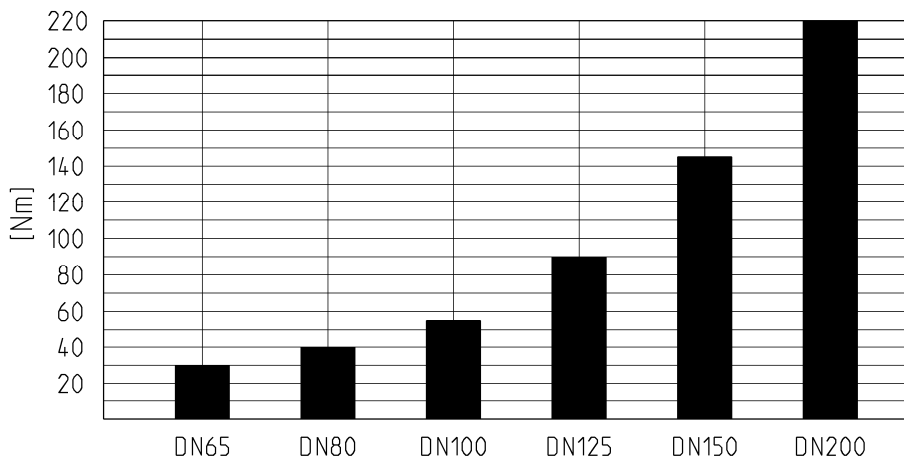
Pressure loss – Diagram



Kv value

| Pressure loss | DN65 | DN80 | DN100 | DN125 | DN150 | DN200 |
|---------------|------------|------------|------------|-------------|-------------|-------------|
| 0,001 bar | 73 l/min | 88 l/min | 260 l/min | 433 l/min | 805 l/min | 1200 l/min |
| 1 bar | 2300 l/min | 2800 l/min | 8200 l/min | 13700 l/min | 25500 l/min | 38000 l/min |

Torque



Tightening torque of screws for flange connections

| | | | | | | |
|----|----|----|-----|-----|-----|-----|
| DN | 65 | 80 | 100 | 125 | 150 | 200 |
| Nm | 15 | 18 | 20 | 30 | 40 | 55 |

Butterfly Valve K4 with pneumatic actuator

Technical Data:

CONTROL FUNCTIONS

SR SINGLE ACTING

AIR CONSUMPTION (FULL CYCLE)

| Actuator | UT-25 SR | UT-30 SR | UT-35 SR | UT-40 SR | UT-45 SR | UT-50 SR |
|----------------------|----------|----------|----------|----------|----------|----------|
| Norm dm ³ | 0,48 | 0,65 | 1,2 | 1,6 | 1,85 | 2,90 |

DA DOUBLE ACTING

AIR CONSUMPTION (FULL CYCLE)

| Actuator | UT-17 DA | UT-20 DA | UT-25 DA | UT-30 DA | UT-35 DA | UT-40 DA |
|----------------------|----------|----------|----------|----------|----------|----------|
| Norm dm ³ | 0,55 | 0,17 | 1,10 | 1,40 | 2,45 | 3,05 |

LIMIT SWITCH BOX

General:

- Limit switch box with two mechanical limit switches
- IP65 protected
- cable gland M20 x 1,5

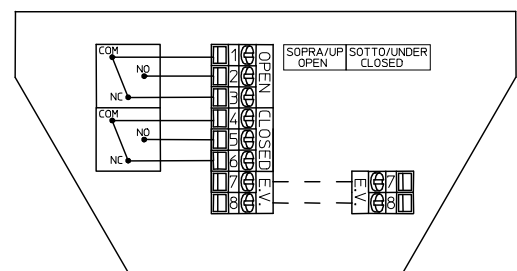
Material:

- Casing: Polycarbonate black
- Casing cover: Polycarbonate with visual position indication
- Mounting brackets + screws: stainless steel
- Seals: EPDM

Voltage: 1 – 250 V AC/DC

Current:

- 16 A (250V AC)
- 2,5 A (24V DC)



Butterfly Valve K4 with pneumatic actuator



PILOT VALVE NAMUR

General:

- Solenoid valve NAMUR with combined 5/2- and 3/2-Wege function + standard coil
- easy change from 5/2- to 3/2-way-operation by adapter plates
- manual override as standard

Material:

- casing: anodised aluminium
- piston: aluminium
- sealing: NBR
- screws and spring: stainless steel

Current:

- 24 V DC (3W)
- 230 V AC (5VA)

